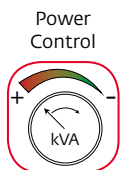
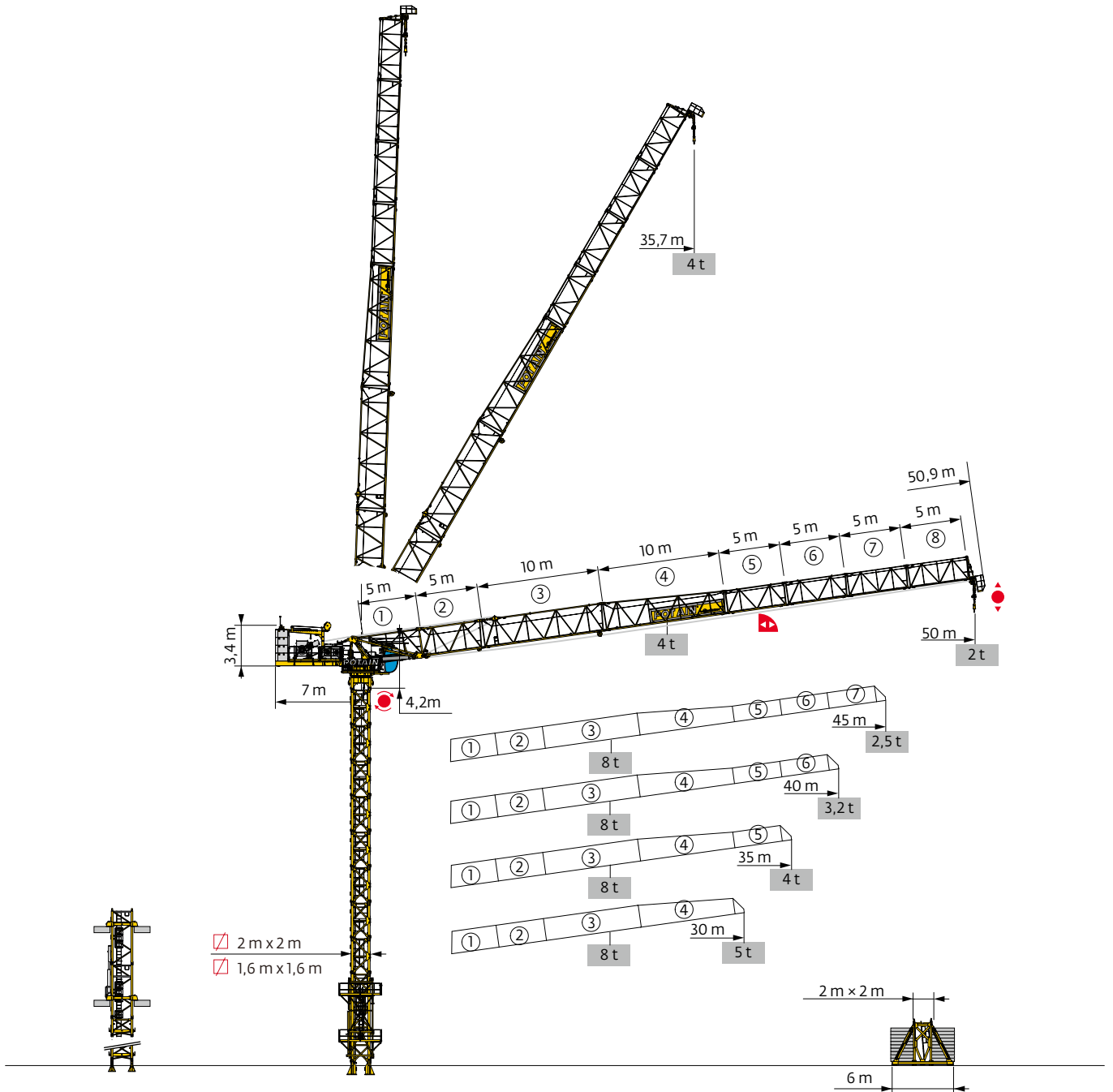
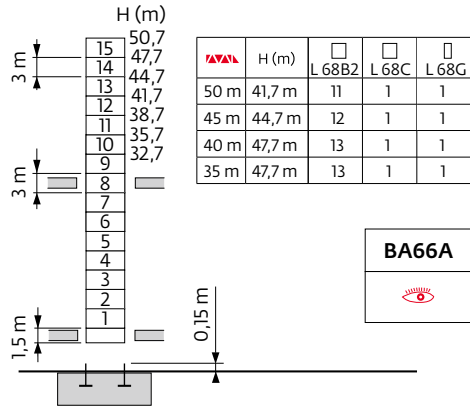
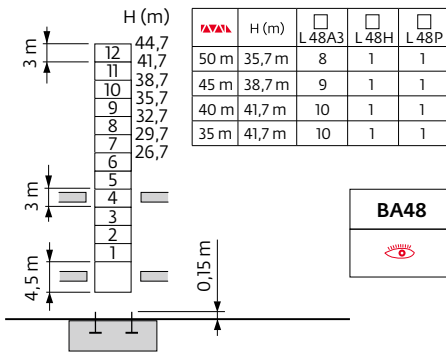
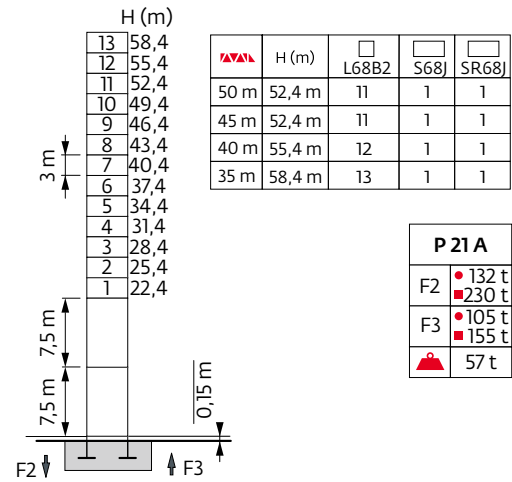
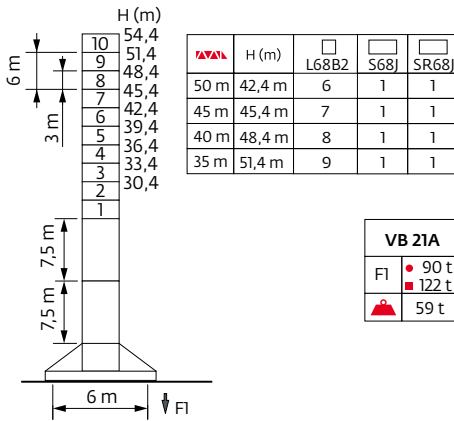
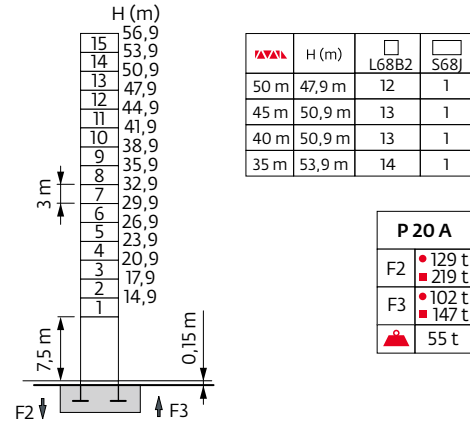
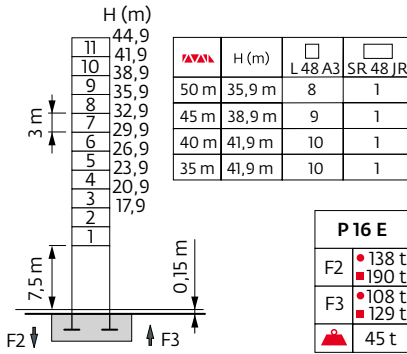


MCH 125

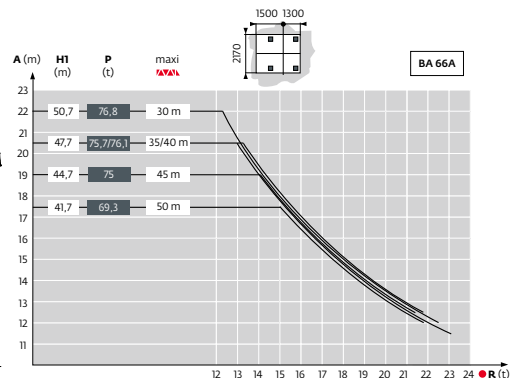
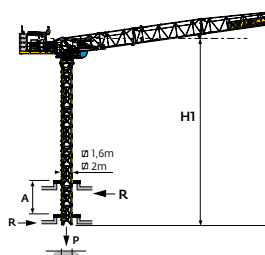
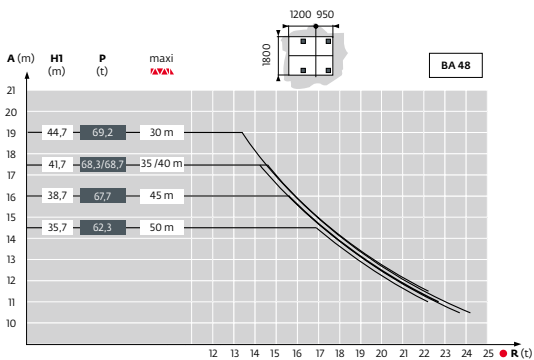


Mât - Réactions / Mast - Reaktionskräfte / Mast - Reactions / Mástil - Reacciones / Torre - Reazioni
 Tramo - Reações / Реакция опор мачты

30 m



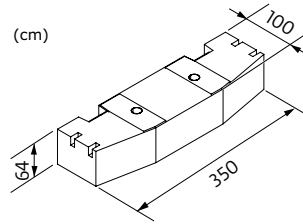
Télescopage sur dalles / Kletterkrane im Gebäude / Climbing Crane / Telescopage grua trepadora / Gru in cavedio
 Telescopagem sobre lages / Кран, ползущий внутри здания



Lest de contre-flèche / Gegenauslegerballast / Counter-jib ballast / Lastre de contra-flecha / Zavorra di controbraccio
 Lastro da contra lança / Противовес стрелы

▲▲▲▲	4750 kg	▲▲▲ (kg)
30 m	4	19000
35 m	4	19000
40 m	4	19000
45 m	4	19000
50 m	4	19000

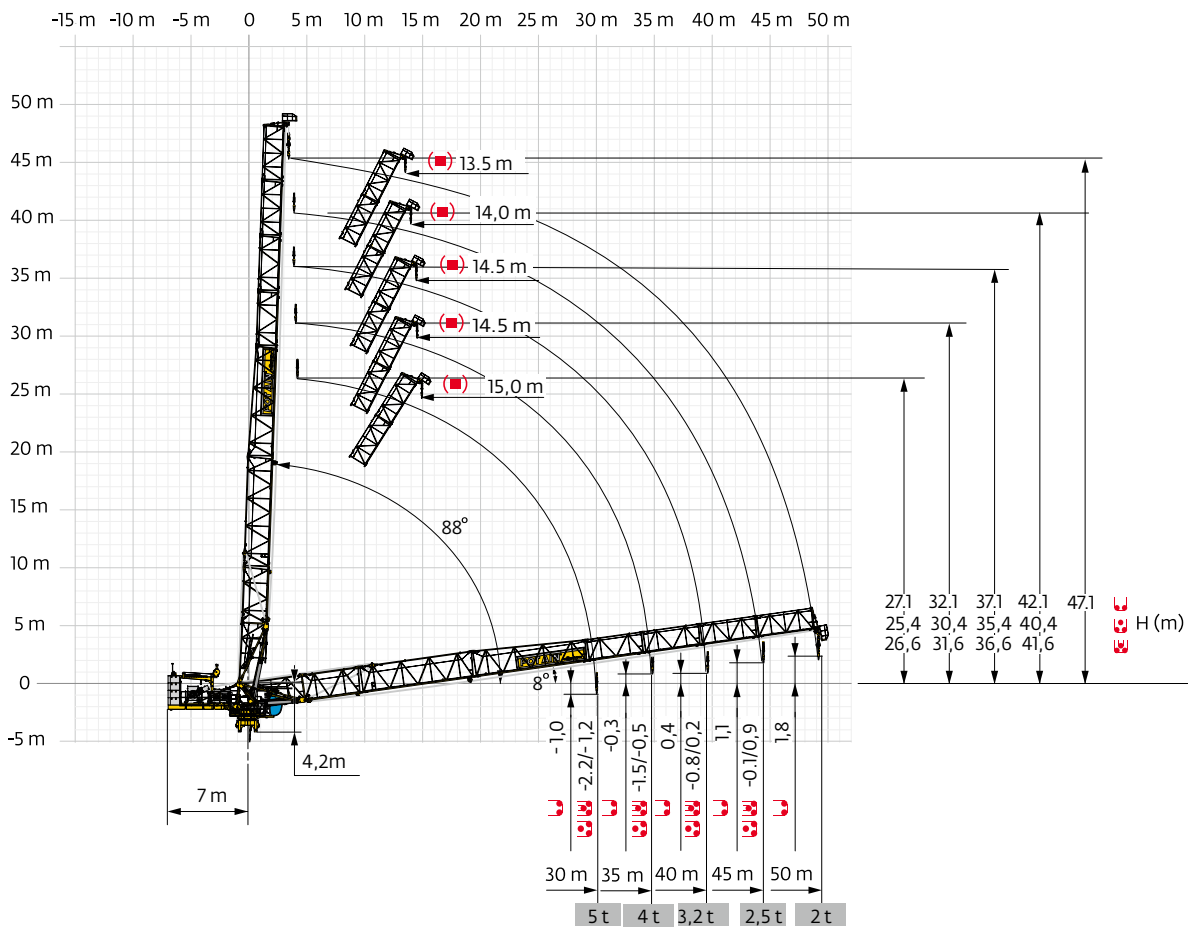
CCL - 4750 kg (cm)



Lest de base / Grundballast / Base ballast / Lastre de base / Zavorra di base
 Lastro da base / Базовый Балласт



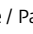
▣	VB 21	30 m	35 m	40 m	45 m	50 m	
2 m		H (m)	54,4	51,4	48,4	45,4	42,4
		▲▲▲ (t)	132	132	132	132	120

Flèche relevée / Ausleger in Steilstellung / Luffing jib / Flecha izada / Braccio impennato
 Lança inclinada / Маховая стрела



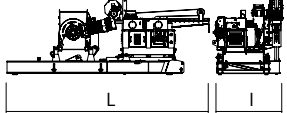
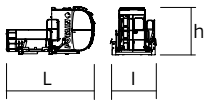
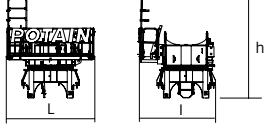
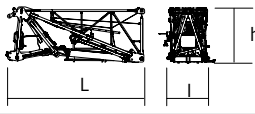
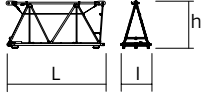
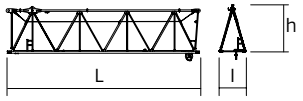
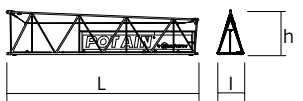
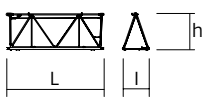
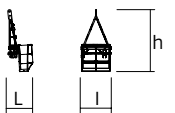
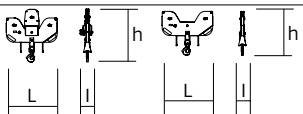


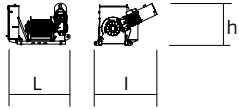
Encombremet et poids / Abmessungen und Gewicht / Dimensions and weight / Dimensiones y peso / Ingombro e peso
dimensões e pesos / габаритные размеры и вес

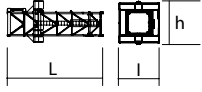
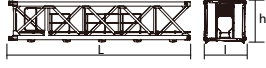
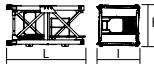
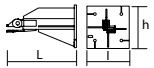
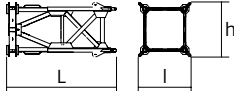
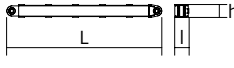
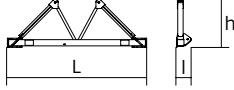
Partie tournante / Drehender Kranteil / Slewing crane part / Parte giratoria

Parte rotante / Parte rotativa / Поворотная часть :  50 m -  -  40LVF / 60LVF

 x 4

 x 4

Partie tournante / Drehender Kranteil / Slewing crane part Parte giratoria / Parte rotante / Parte rotativa Поворотная часть	L (m)	I (m)	h (m)	kg (+/- 5%)		
Contre-flèche / Gegenausleger Counter-jib / Contra-flecha Controbraccio / Contra-lança Контр-стрела	 L I h	40LVF 6,63 6,63	2,18 2,18	2,47 2,47	5513 5912	
Cabine / Kabine Cab / Cabina Cabina / Cabina Кабина	 L I h	V140SR	4,85	2,28	2,37	1800
Pivot / Krankopf Towerhead / Pivote Portaralla / Pivot Секция поворотной части	 L I h	1.6 m 2.0 m	3,17 3,17	2,8 2,8	3,6 3,6	5200 6300
Elément de flèche / Auslegerement Jib section / Elemento de flecha Elemento di braccio / Elemento de lança Секция стрелы	 L I h	①	6,24	2,08	2,56	5901
Elément de flèche / Auslegerement Jib section / Elemento de flecha Elemento di braccio / Elemento de lança Секция стрелы	 L I h	②	5,23	1,59	2,52	986
Elément de flèche / Auslegerement Jib section / Elemento de flecha Elemento di braccio / Elemento de lança Секция стрелы	 L I h	③	10,25	1,44	2,5	1455
Elément de flèche / Auslegerement Jib section / Elemento de flecha Elemento di braccio / Elemento de lança Секция стрелы	 L I h	④	10,21	1,42	2,37	1426
Elément de flèche / Auslegerement Jib section / Elemento de flecha Elemento di braccio / Elemento de lança Секция стрелы	 L I h	⑤ ⑥ ⑦ ⑧	5,17 5,15 5,15 5,15	1,42 1,39 1,38 1,38	1,96 1,93 1,92 1,91	473 375 329 285
Elément de flèche / Auslegerement Jib section / Elemento de flecha Elemento di braccio / Elemento de lança Секция стрелы	 L I h		1,23	1,48	3,05	180
Moufle / Hubflasche Pulley block / Aparejo Bozzello / Cadernal Полиспаст	 L I h	 	1,46 1,46	0,36 0,22	1,50 1,25	380 200
Treuil de levage (+ câble) / Hubwerk (+ Seil) Hoisting winch (+ rope) / Mecanismo de elevación (+ cabo) Argano di sollevamento (+ fune) Guincho de elevação (+ cabo) Подъемная лебедка (+ канатом)	 L I h	40 LVF 60 LVF	2,04 2,02	2,08 2,03	1,37 1,35	1439 1538

Equipement de télescope / Teleskopierausrüstung / Telescoping equipment Equipo de telescopaje / Equipaggiamento di telescopaggio / Equipamento de telescopagem Оборудование для телескопирования		L (m)	I (m)	h (m)	kg (+/- 5%)	
Cage de télescope / Teleskopwagen Telescopic cage / Jaula de telescopaje Gabbia di telescopaggio / Gaiola de telescopagem для телескопирования крана		□ 2 m □ 1,6 m	7,3 6,8	4,3 3,65	4,3 3,6	4605 3730
Mât / Mastwerk / Masts Mástil / Torre / Coluna Мачты						
S 68J SR 68J SR 48 JR		□ 2 m □ 2 m □ 1,6 m	7,74 7,74 7,8	2,1 2,1 1,8	2,1 2,1 1,7	4170 5175 3185
L 68 B3 L 48 A3		□ 2 m □ 1,6 m	3,26 3,24	2,12 1,67	2,12 1,73	1530 1363
Bases / Kranbasen / Crane bases Bases / Basi / Bases Фундамент под кран						
Pieds de scellement / VerankerungsfüÙe Fixing angles / Pie de empotramiento Montante da annegare / Angulos fixadores анкера		P 16 E P 20 A P 21 A	1,3 1,4 1,3	0,8 0,6 0,8	0,8 0,6 0,8	500 300 500
Mât-châssis / Grundmasteinheit Basic mast unit / Tramo-chassis Elemento base / Tramo-chassis Мачта для крепления к шасси		VB 21 A	5,07	2,39	2,39	4360
Haubans / Mastabstützungen Struts / Tornapuntas Puntoni / Escoras Растяжка		VB 21 A	4,51	0,26	0,27	390
Sommier / Unterwagenhälfte Half-bearer / Testero Testata / Estrutura base Траверса		VB 21 A	6,7	0,7	2,31	1600

Mécanismes / Triebwerke / Mechanisms / Mecanismos / Meccanismi
Mecanismos / Механизмы

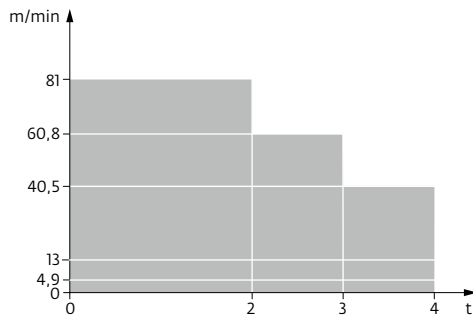
400 V - 50 Hz													hp	kW	
	40 LVF 20	m/min	4,9	13	40,5	60,8	81	2,5	6,5	20,3	30,4	40,5	40	30	456 m
		t	4	4	4	3	2	8	8	8	6	4			
	60 LVF 20	m/min	6	16	50	75	100	3	8	25	37,5	50	60	45	553 m
		t	4	4	4	3	2	8	8	8	6	4			
	40 VVH 80	min	2									40	30		
	RVF 152 Optima +	rpm	0 → 0,8									2x6	2x4,4		
VB 21A		m/min													

IEC 60204-32	kVA
400 V (+10% -10%) 50 Hz	40 LVF : 74 kVA 60 LVF : 90 kVA

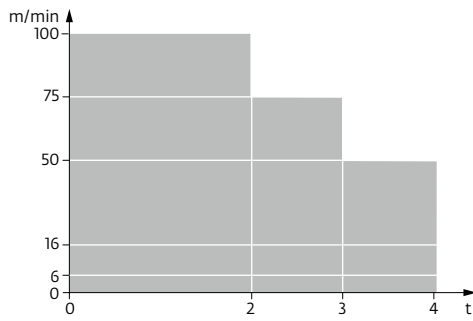
480 V - 60 Hz													hp	kW	
	40 LVF 20	m/min	4,9	13	40,5	60,8	81	2,5	6,5	20,3	30,4	40,5	40	30	456 m
		t	4	4	4	3	2	8	8	8	6	4			
	60 LVF 20	m/min	6	16	50	75	100	3	8	25	37,5	50	60	45	553 m
		t	4	4	4	3	2	8	8	8	6	4			
	40 VVH 80	min	2									40	30		
	RVF 152 Optima +	rpm	0 → 0,8									2x7,2	2x5,3		
VB 21A		m/min													

IEC 60204-32	kVA
480 V (+6% -10%) 60 Hz	40 LVF : 80 kVA 60 LVF : 96 kVA


















40 LVF 20



60 LVF 20



FR

-  Appel de flèche
-  Réactions en service
-  Réactions hors service
-  A vide sans lest avec flèche et hauteur maximum
-  Poids total du lest
-  Camion 13.4 m
-  Conteneur High Cube 40°
-  Cadre d'ancrage serré
-  Cadre d'ancrage desserré
-  Heben
-  Relevage
-  Orientation
-  Translation
-  Puissance nominale
-  Fonction Power Control : vitesses levage «montée» adaptées à la puissance disponible
-  Voir télescopage sur dalles
-  Nous consulter

DE

- Auslegerüberhöhung
- Reaktionskräfte in Betrieb
- Reaktionskräfte außer Betrieb
- Gewicht ohne Last, ohne Ballast, mit Ausleger und max. Höhe
- Ballast-Gesamtgewicht
- Lkw 13.4 m
- Container High Cube 40°
- Fester Verankerungsrahmen
- Loser Verankerungsrahmen
- Heben
- AL-Verstellen
- Schwenken
- Kranfahren
- Nennleistung
- Funktion Power Control : An die verfügbare Leistung angepasste Hubgeschwindigkeiten „Heben“
- Siehe Kletterkrane im Gebäude
- Auf Anfrage

EN

- Jib elevation
- Reactions in service
- Reactions out of service
- Weight without load, without ballast, with jib and max. height
- Total ballast weight
- Lorry 13.4 m
- Container High Cube 40°
- Tightened anchorage frame
- Loosened anchorage frame
- Hoisting
- Luffing
- Slewing
- Travelling
- Rated power
- Power Control function: „Hoisting“ speeds adapted to the available power
- See climbing crane
- Consult us

ES

- Elevación de la flecha
- Reacciones en servicio
- Reacciones fuera de servicio
- Peso en vacío sin lastre, con brazo y altura máxima
- Peso total del lastre
- Camión 13.4 m
- Contenedor High cube 40°
- Marco de anclaje de apriete
- Marco de anclaje de desapriete
- Elevación
- Izado
- Orientación
- Traslación
- Potencia nominal
- Función Power control (control de la potencia): velocidades de elevación "arriba" adaptada a la energía disponible
- Vea grúa trepadora
- Consultarnos

IT


- Inclinazione braccio
- Reazioni in servizio
- Reazioni fuori servizio
- Peso a vuoto, senza zavorra, con braccio e altezza massimi.
- Peso totale della zavorra
- Camion 13.4 m
- Container High Cube 40°
- Quadro di ancoraggio stretto
- Quadro di ancoraggio allentato
- Sollevamento
- Brandeggio
- Rotazione
- Traslazione
- Potenza nominale
- Funzione Power Control : velocità del sollevamento « salita » adattate alla potenza elettrica disponibile
- Consultare gru in cavedio
- Consultateci

PT

- Desvio da lança
- Reacções em serviço
- Reacções fora de serviço
- Peso em vazio sem lastro com lança e altura máxima.
- Peso total do lastro
- Camião 13.4 m
- Contentor 40°
- Quadro de amarração apertado
- Quadro de amarração solto
- Elevação
- Levantamento
- Rotação
- Translação
- Potência nominal
- Função Power control (controlo de potência): velocidades de elevação "subir" adaptada a energia disponível
- Ver telescopagem sobre lages
- Consultar-nos

RU

- подъем стрелы
- Реакция при работе
- Реакция в покое
- Вес пустого, без балласта, со стрелой, максимальной высоты.
- Общий вес балласта
- Ррузовой автомобиль 13.4 м
- Контейнер повышенной вместимости длиной 40°
- Прикрепленная анкерная рама
- Отсоединенная анкерная рама
- Подъем
- Маховый подъем
- Поворот
- Перемещение крана
- Номинальная мощность
- Функция Power control: изменение скорости подъема в зависимости от мощности источника питания
- См. кран, ползущий внутри здания
- Проконсультируйтесь у нас

 Document commercial non contractuel. Pour toute information technique se référer à la notice correspondante. Unverbindliches Vertriebsdokument. Für technische Informationen, siehe die entsprechenden Anweisungen. This commercial document is not legally binding. For any technical information, please refer to the corresponding instructions. Documento comercial no contractual. Para cualquier información técnica, ver la noticia correspondiente. Documento commerciale non vincolante, per tutte le informazioni tecniche fare riferimento al catalogo istruzioni. Documento comercial não contratual. Para qualquer informação técnica complementar consultar as respectivas instruções. Этот коммерческий документ не является юридически обязательным. Для получения технической информации, см. соответствующие инструкции.



Americas
Manitowoc, Wisconsin, USA
 Tel: +1 920 684 6621
 Fax: +1 920 683 6277

Shady Grove, Pennsylvania, USA
 Tel: +1 717 597 8121
 Fax: +1 717 597 4062

Europe, Middle East, Africa
Dardilly, France
 Tel: +33 (0)4 72 18 20 20
 Fax: +33 (0)4 72 18 20 00

China
Shanghai, China
 Tel: +86 21 6457 0066
 Fax: +86 21 6457 4955

Greater Asia-Pacific
Singapore
 Tel: +65 6264 1188
 Fax: +65 6862 4040